



TAG WE'RE IT!

Doonan brings Class 8 drop deck technology to the Tag trailer market

Doonan's New Tag Trailer Series ("Chaparall II Tag") provides the perfect combination of aluminum and galvanized steel for the ultimate in corrosion protection.

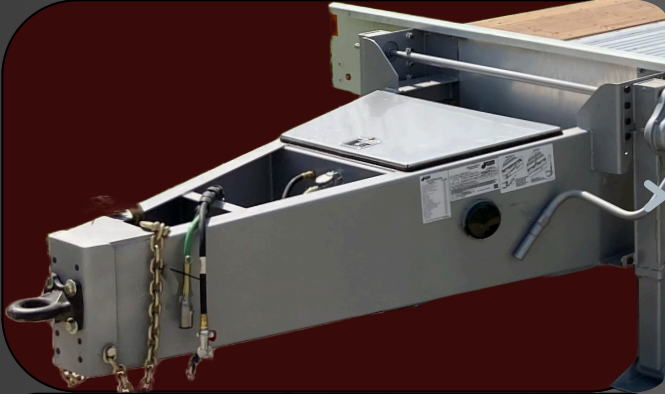
STANDARD IN 20, 25, & 30 TON CONFIGURATIONS



A new Tag trailer based on a proven drop deck trailer design.



The Chaparral II Tag trailer series uses the same aluminum main beam, crossmember, and side rail extrusions that have been used in the Chaparral II Class 8 drop deck trailers since 2013.



Doonan replaced the steel gooseneck used on its Chaparral II drop deck trailers with a galvanized steel A-frame pintle hitch (tongue /drawbar) to providing unmatched corrosion protection.



The Chaparral II Tag trailer series incorporates Doonan's patented continuous contact rub rail (CCRR), introduced in 2020 on its Titanium Class 8 drop deck trailers, for superior siderail impact protection. In addition to the 7 pair of D-rings, all Chaparral II Tag trailers are equipment with double LL winch track and J-hook extrusions for nearly limitless tie down options.



Doonan utilizes custom aluminum ramps to achieve an 8-degree angle providing for easy equipment loading and unloading. The spring assisted light weight ramp is extremely easy to Lift, Lower and Slide side to side minimizing any potential injury to operator.

Benefits of the new Tag trailer

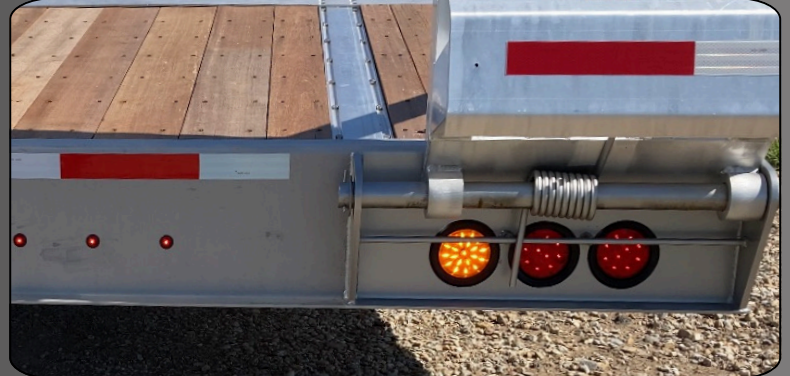
Payload Capacity

The Doonan Tag Trailer tackles even the heaviest loads with ease, maximizing your productivity and efficiency on every job.



Lighting

Standard LED lighting, & Reflective tape illuminates your trailer for maximum visibility in all conditions, keeping you and others safe.



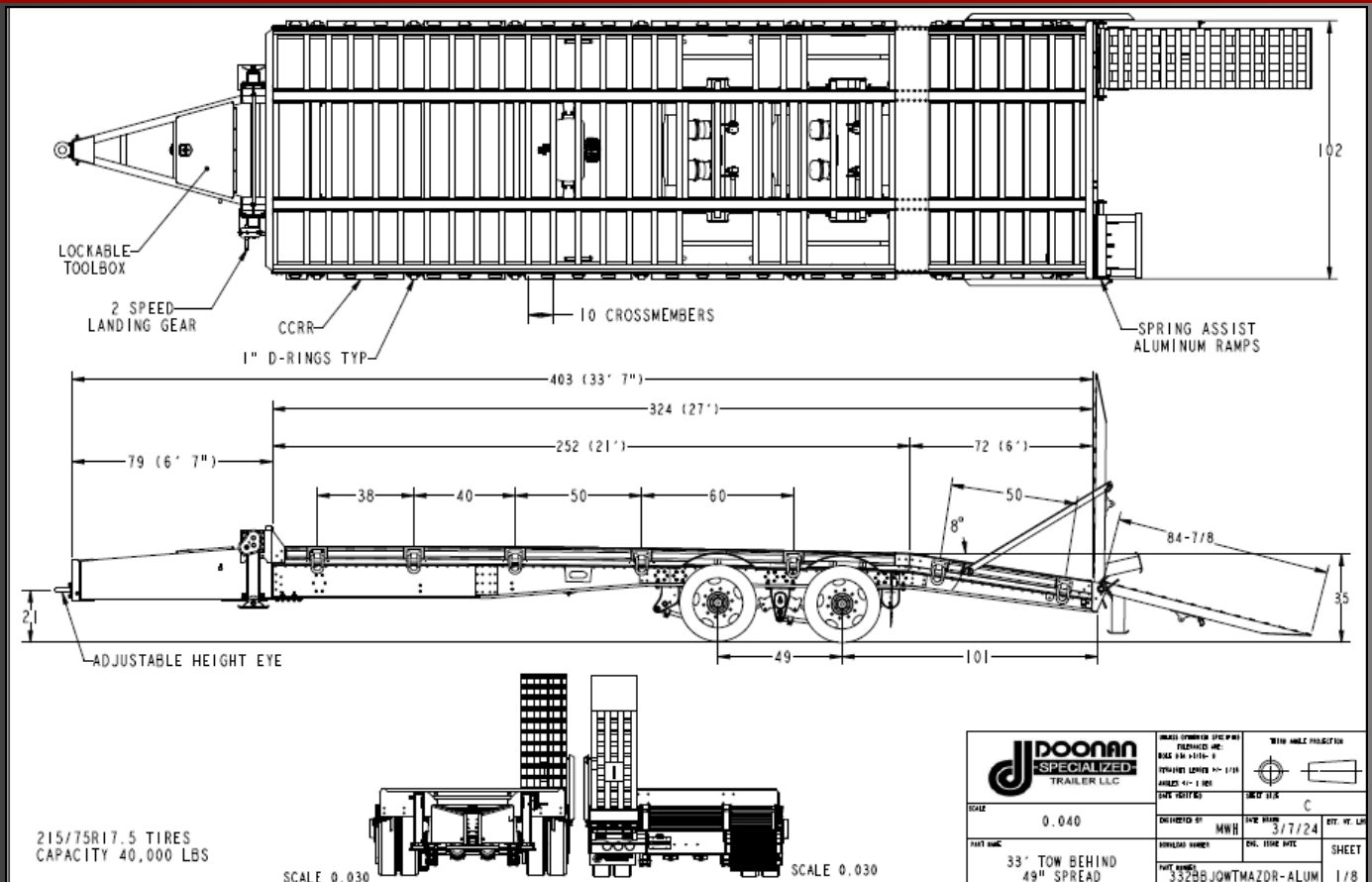
Pintle Hitch

The unique design of a pintle hitch allows for more articulation between the trailer and tow vehicle. This increased flexibility is crucial when navigating uneven terrain or off-road conditions, ensuring a smoother ride and better control.



Known for its customization in the Class 8 drop deck market, Doonan is proud to bring its countless options and specialized expertise to the Tag trailer market. Checkout Doonan website for list of available options and accessories. Don't see what you need, contact us for a customized solution!

Chaparral II Tag Trailer Series Standard Specifications



Frame			
Payload Capacity	40,000 lb	50,000 lb	60,000 lb
Overall Width	8' 6" (102")	8' 6" (102")	8' 6" (102")
Deck Height	35"	35"	35"
Dovetail Length	72"	72"	72"
Main Beam	Aluminum Standard Duty	Aluminum Standard Duty	Aluminum Heavy Duty
Side Rails	Aluminum Extrusion w/ CCRR	Aluminum Extrusion w/ CCRR	Aluminum Extrusion w/ CCRR
Crossmembers	5" Aluminum	5" Aluminum	5" Aluminum
Tongue / Drawbar			
Pintle Hitch Type	3" Eye	3" Eye	3" Eye
Pintle Hitch Eye (Adjustable Height)	21"-28"	21"-28"	21"-28"
Safety Chains w/ Hooks	(2) 7/16" chains	(2) 7/16" chains	(2) 1/2" chains
Landing Gear	Dual 2-Speed 50K Drop Leg Jacks	Dual 2-Speed 50K Drop Leg Jacks	Dual 2-Speed 50K Drop Leg Jacks
Dovetail & Ramps			
Dovetail	Aluminum, 8 degree slope	Aluminum, 8 degree slope	Aluminum, 8 degree slope
Electrical			
Marker / Sidelights / Strobes	3 Microdot lights and Mid-turn lamp	3 Microdot lights and Mid-turn lamp	3 Microdot lights and Mid-turn lamp
Decking/Flooring			
Main Decking (Outside Main Beams)	1-3/8" Apitong	1-3/8" Apitong	1-1/2" Apitong
Beavertail Flooring	1-3/8" Apitong	1-3/8" Apitong	1-1/2" Apitong
Axles, Suspension, & Running Gear			
# of Axles	2	3	3
Axle Spacing	Fixed Type 49"	Fixed Type 49"	Fixed Type 49"
Axle Capacity	25,000 lbs	25,000 lbs	25,000 lbs
Brake System	Air Brakes with ABS	Air Brakes with ABS	Air Brakes with ABS
Tires & Wheels			
Tires	215/75R x 17.5 "H"	215/75R x 17.5 "H"	235/75R x 17.5 "H"
Load Securements			
# of D-Rings	7 Each side	7 Each side	7 Each side
Double LL Winch Track	Both sides	Both sides	Both sides
J-Hook Extrusion	Integrated into each side rail	Integrated into each side rail	Integrated into each side rail